

RS636-2GF4GT-4POE

Guide rail managed industrial Ethernet switch, with 2 Gigabit fiber ports and 4 Gigabit POE copper ports



- 2 Gigabit fiber ports and 4 Gigabit POE copper ports are provided
- Fan-free design, operating temperature: -40 ~ 85°C
- IP40-rated protection, shock-resistant aluminum enclosure
- Support for dual power supply redundant backup input, with a wide range of 48-57 VDC
- EMC industrial rating level 4 electromagnetic compatibility standard
- WEB interface, dial switch rapid configuration
- Support for one-button recovery of factory settings
- Support for STP/RSTP ring protection, and SNMP V1/V2c network management platform



Product profile

RS636-2GF4GT-4POE is a guide rail managed industrial Ethernet switch that provides 2 Gigabit fiber ports and 4 Gigabit POE copper ports via a fan-free and low-power design with industrial rating level 4 and IP40-rated protection. Each product, featuring an operating temperature of -40 ~ 85°C, superior solidness, design for network communications in harsh applications, high EMI/EMS protection, has been 100% qualified in aging tests.

For example, STP/RSTP, 802.1Q VLAN, QoS function, port aggregation, port mirroring, loop detection, etc.; support for port configuration, jumbo frame mode, port statistics, speed dial configuration, online upgrade, etc.; support for WEB, SNMP and other access methods. The friendly, simple and convenient interface design of network management system offers a good user experience.

Product features

- Support the 802.1Q VLAN of 4K range;
- Support the web page management configuration; and hardware one-button recovery of factory settings
- Dual power inputs with a wide range of 48-57 VDC;
- Dial switches enable ringing, port isolation and forced 10M
- QoS (IEEE 802.1p and DSCP) improves data transfer certainty;
- Port mirroring feature assists in online troubleshooting and allows for data analysis and monitoring
- Port aggregation increases bandwidth and enhances the reliability of network connection
- Spanning Tree Protocol STP/RSTP ring redundancy
- Port loop detection reduces the impact of access loop on the entire network

Product properties

Applicable standards

IEEE 802.3 10BaseT
IEEE 802.3u 100BaseT
IEEE 802.3z 1000BaseFX and 1000BaseT
IEEE 802.3af/802.3at POE
IEEE 802.3x flow control
IEEE 802.1d-2004 STP protocol
IEEE 802.1w RSTP protocol
IEEE 802.1p Qos
IEEE 802.1q VLAN
SNMPv1/v2c
HTTP, DHCP Client

Switching feature

Backplane bandwidth: 12 Gbps

List of MAC addresses: 2K

Chip buffer size: 12 KByte

Port

Fiber port: 1000 Mbps

Copper port: 10/100/1000 Mbps self-adaptive, Full/Half duplex mode, MDI/MDI-X supported.

LED indicator: P1, P2, RUN, L/A, POE

Power source requirement

Input voltage: DC 48~57 V (redundancy)

Full-load power consumption: 5W

Physical properties

Enclosure: Aluminum enclosure, IP40-rated protection

Size: 116 × 85 × 37 mm

Weight: 430 g

Mounting method: Guide rail type

Environmental restrictions

Working temperature: -40 ~ 85°C (-40 ~ 185°F)

Storage temperature: -40 ~ 85°C (-40 ~ 185°F)

Relative ambient humidity: 5 ~ 95% (non-condensing)

Standards and certification

EMS:

IEC61000-4-2(ESD) level 4, IEC 61000-4-4 (EFT) level 4, IEC 61000-4-5(Surge) level 4

Anti-vibration performance: IEC 60068-2-6

Shock resistance: IEC 60068-2-27

Free fall: IEC 60068-2-32

Note: Please go to the official website of Wintop Optical for the latest certification status.

MTBF (mean time between failures)

Time: 500000 h

Warranty

Quality assurance: 5 years

Shenzhen Wintop Optical Technology Co., LTD.

11F~12F, Senhainuo Kechuang Building, Shilongzai Community, Shiyan Street, Baoan District, Shenzhen China

Tel: +86-755-26641737

Fax: +86-755-86555405

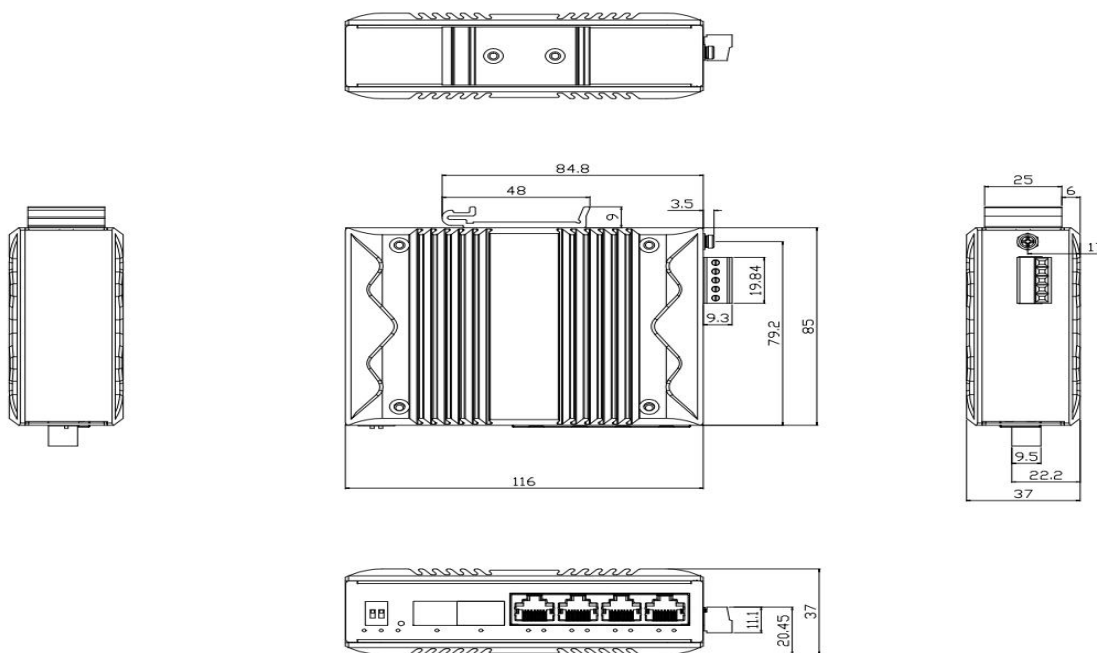
E-mail: sales@wintoptec.com

Http: //www.wintoptec.com

Fiber properties

	1000BaseFX	
	Multimode	Single mode
Wavelength	850 nm	1310/ 1550nm
Maximum transmission power	-3 dBm	0 dBm
Minimum transmission power	-8 dBm	-10 dBm
Receiving sensitivity	-19 dBm	-22 dBm
Link budget	11 dB	12 dB
Typical distance	550 m	20 km
Saturation	-3 dBm	-3 dBm

Product size (mm)



Order information

Optical model	Port type			
	10/100BaseT	10/100/1000BaseT	1000BaseFX	
			Single mode	Multimode
RS636-2GF4GT-4POE	—	4	2	

Parking list

- Ethernet switch
- Installation accessories
- User's Manual
- Warranty Card & Conformity Certificate